

NATURAL WOOD INSPIRATION

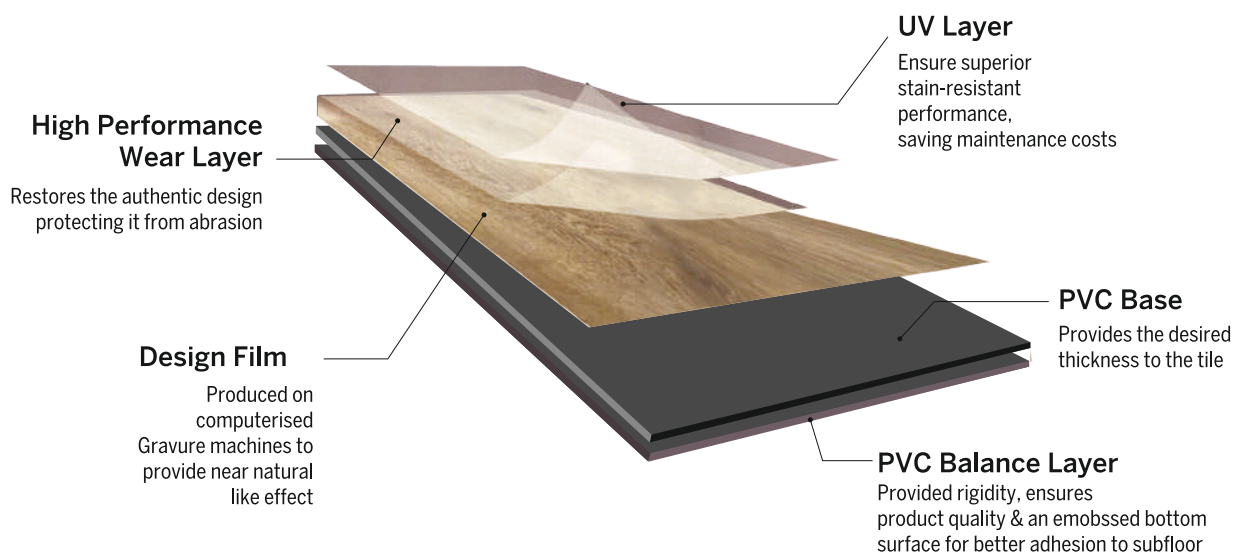


LUXURY VINYL TILES & PLANKS

INGENIOUS are the latest collection of PVC Tiles & Planks. The shades and designs are carefully chosen to complement the natural wood and stone finish **INGENIOUS** is designed to replicate hard surface flooring materials such as stone or wood. Available in planks or tiles, LVT uses a realistic photographic print film and a clear vinyl layer that opens a wide variety of design concepts.

As the name implies, look like planks of hardwood or stone floors, they are individual pieces of vinyl (not sheet vinyl).

INGENIOUS are exceptionally durable, If installed and maintained correctly, it has a long life. With that said, vinyl is a great choice for the rooms in your house, office, hotels, showrooms, shops, portacabins and schools that gets the most foot traffic. Additionally, LVT flooring has a wear layer on its surface that resists scratches and stains and with the addition of the PUR surface treatment maintenance becomes very easy & effortless.



Salient Features: -

- Special PUR surface protection.
- Available in planks & tile sizes
- Reduces noise impact
- No worry for termites and moisture
- Natural wooden and stone surface textures

Application areas:

Office, hotels, malls, schools, shops, residences etc.

Available thickness:

1.50 mm, 2.00 mm, 3.00 mm & 4.00 mm

Easy to install



Low Maintenance



Stain Resistant



100% Recyclable



Fire Resistant



Termite Resistant



100% Recyclable



Water Resistant

Available Product Range:- We at Tileque produce a range of Luxury Vinyl Tiles and Planks depending on its thickness, wear layer, top surface treatment and area of application and salient features of each of them is mentioned herebelow.

All the qualities are available in Planks & Tiles. The wooden designs are produced in Planks and the stone & granite designs are produced in Tiles sizes.

Timberland - Maestro

Maestro is available in 3.0 mm thickness with 0.30 mm wear layer. The wear layer of 0.30mm is most suited for heavy duty applications and is recommended for applications like hotel corridors, airconditioned shops, factories with clean room conditions, banquet halls, large offices, etc. The 3.00mm thickness also ensures that under floor undulations are subdued so as to enhance the aesthetic appearance. The product is with PUR surface treatment which enhances features such as - scratch resistance, dust repellent and easiness to clean. The all around sharp edges ensure a near invisible joint once flooring has been properly installed on the floor.

Thickness: 3.00 mm (0.30 mm) With UV
 Packing: 16 tiles per box (2.23 sq-mtr)
 Loadability: 2016 Boxes per 20' container
 Usage: Factory, Shopping Malls, Hotels etc

Timberland - Exotica

Exotica is available in 2.0 mm thickness with 0.20 mm wear layer. The product is also treated with PUR surface protection and can be recommended for semi- commercial applications like offices, smaller shops, homes & hotel rooms. The 0.20mm wear layer is suitable for medium duty traffic and the PUR surface treatment ensures very easy maintenance. The sharp edges ensure a near invisible joint once flooring is installed professionally.

Thickness: 2.00 mm (0.20 mm) With UV
 Packing: 24 pcs / box (3.34 sq mtr)
 Loadability: 2036 Boxes per 20' container
 Usage: Offices, Schools, Hotels and Porta Cabins etc

Timberworld

Timberworld is a substitute range of Timberworld - Exotica in 1.50 mm thickness & 0.15 mm wear layer.

The product is recommended for light duty use and residential areas. The thinner wear layer & reduction in total thickness helps in reducing the cost and is recommended for applications with low traffic. This product also comes with PUR surface protection for easiness in cleaning so maintenance wise or aesthetically, the product is at par with thicker qualities.

Thickness: 1.50 mm (0.10 mm) With UV
 Packing: 24 pcs / box (3.34 sq mtr)
 Loadability: 2694 Boxes per 20' container
 Usage: Offices, Houses, Exhibition booth, Small Shops and Prefab Houses etc

Durofloor - LVT

Durofloor-LVT is an special range suitable for economical or low budget projects. This product is available in 1.50 mm thickness with 0.10 mm wear layer. This product is most suitable where interiors have to be revamped within a tight budget. We recommend Durofloor-LVT for Exhibition booths, porta cabin, labour camps, temporary installations, homes, etc.

Thickness: 1.50 mm (0.10 mm) Without UV
 Packing: 24 pcs / box (3.34 sq mtr)
 Loadability: 2694 Boxes per 20' container
 Usage: Prefab Houses, Low budget projects, Labour camps, Exhibition booth etc

AVAILABLE COLOUR OPTIONS



991101



991102



991201



991202



991301



991302



991303



991305



991306



991307



991401



991402



991403



991404



991405



991501



991502



991503



991504



991505



991506



991601



991602



991603



991604



991605



991606



991701



991702



991703



991801



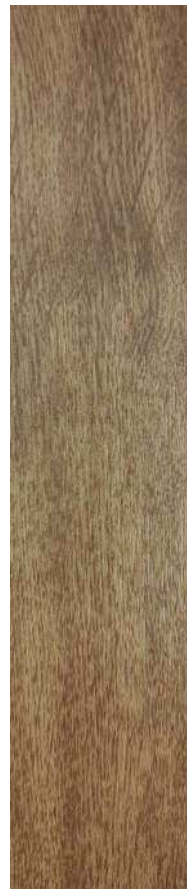
991901



992001



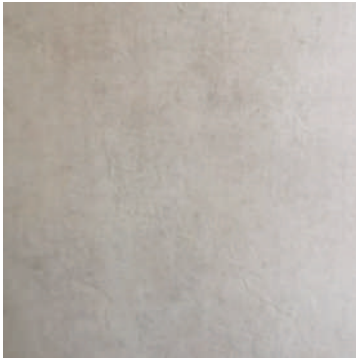
992002



992003

Luxury Vinyl Tiles in Granite & Stone Shades

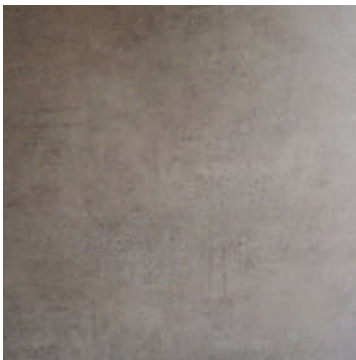
Application areas: Hotels, Offices, Schools
Commercial buildings & Houses



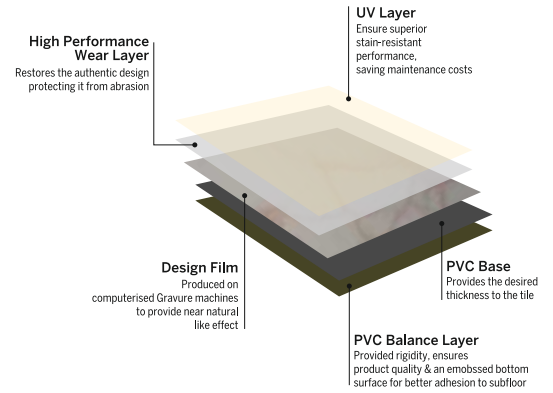
Pearl



Oceano Gris



Slate



Tile Size:

300mm x 300mm

450mm x 450mm

Packaging:

25 tiles per box for 3.0mm

50 tiles per box for 1.50 & 2.0mm



Low Maintenance



Stain Resistant



100% Recyclable



Fire Resistant



Termite Resistant



Eco Friendly



Water Resistant

AVAILABLE SIZES

PLANKS



914.4mm

152.4 mm



914.4mm

288.6 mm

TILES



450 mm

450 mm



300 mm

300 mm



Low Maintenance



Stain Resistant



100% Recyclable



Fire Resistant



Termite Resistant



Eco Friendly



Water Resistant

AVAILABLE TOP EMBOSSING

WOOD



L-701 Wood Grain



L-702 Antique Wood



L-703 Silk

STONE/GRANITE



L-703 Silk



L-704 Stone



Low Maintenance



Stain Resistant



100% Recyclable



Fire Resistant



Termite Resistant



Eco Friendly



Water Resistant



+919586799111